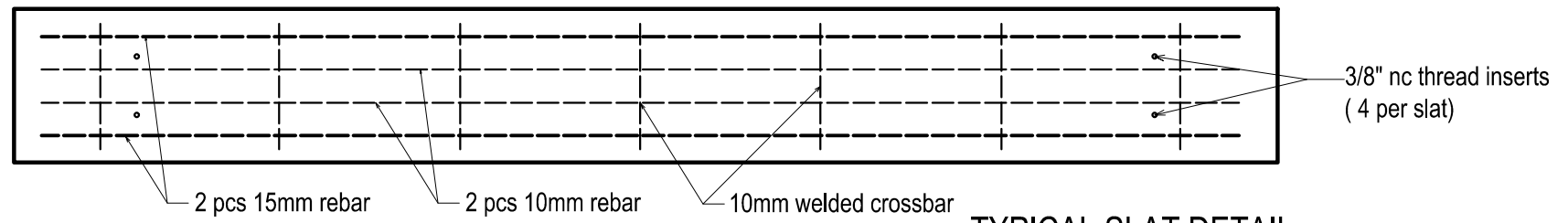


TYPICAL MOUNTING BRACKET DETAIL



TYPICAL SLAT DETAIL

Columbia table configurations include:
 Standard 6'-0" table
 Wheelchair accessible 7'-6" table
 Cedar slats
 Concrete slats
 Solid concrete tops
 Mixed cedar and concrete
 Plain concrete or polished concrete seats and tops
 inset laser etched granite chess board

 www.sandersonconcrete.ca	PROJECT DESCRIPTION: COLUMBIA PICNIC TABLE 6'-0" concrete seats and three 6'-0" concrete table top slats	DRAWN BY: V. TOSHANOVA	SCALE:
		APPROVED BY:	DATE:
12665 116 Ave Surrey, BC V3V 3S6 Ph. 604-580-4108 toll free 800-671-8882 FAX.604-580-411 info@sandersonconcrete.com			DWG NO:
			REV DATE: Mar 2018