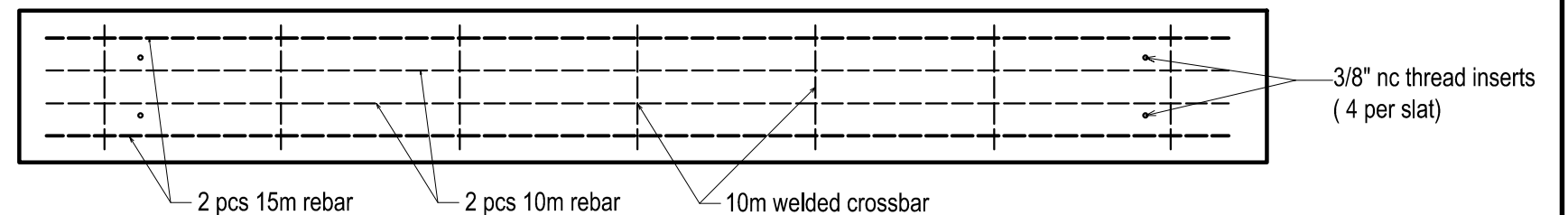


TYPICAL MOUNTING BRACKET DETAIL



TYPICAL SLAT DETAIL

Columbia table configurations include:

Standard 6'-0 table

Wheelchair accessible 7'-6" table

Cedar slats

Concrete slats

Solid concrete tops

Mixed cedar and concrete

Plain concrete or polished concrete seats and tops

inset laser etched granite chess board



PROJECT DESCRIPTION:

COLUMBIA PICNIC TABLE
6'-0 concrete seats and
three 6'-0 concrete table top slats

DRAWN BY:

V. TOSHANOVA

APPROVED BY:

SCALE:

DATE:

DWG NO:

REV DATE:

12665 116 Ave Surrey, BC V3V 3S6

Ph. 604-580-4108

toll free 800-671-8882

FAX. 604-580-4111

info@sandersonconcrete.com