



www.sandersonconcrete.ca  
1 2665 116 Ave Surrey,  
BC V3V 3S6

Toll free 800-671-8882  
FAX.604-580-4111  
info@sandersonconcrete.com

PREPARED FOR

PROJECT NAME

City of Coquitlam

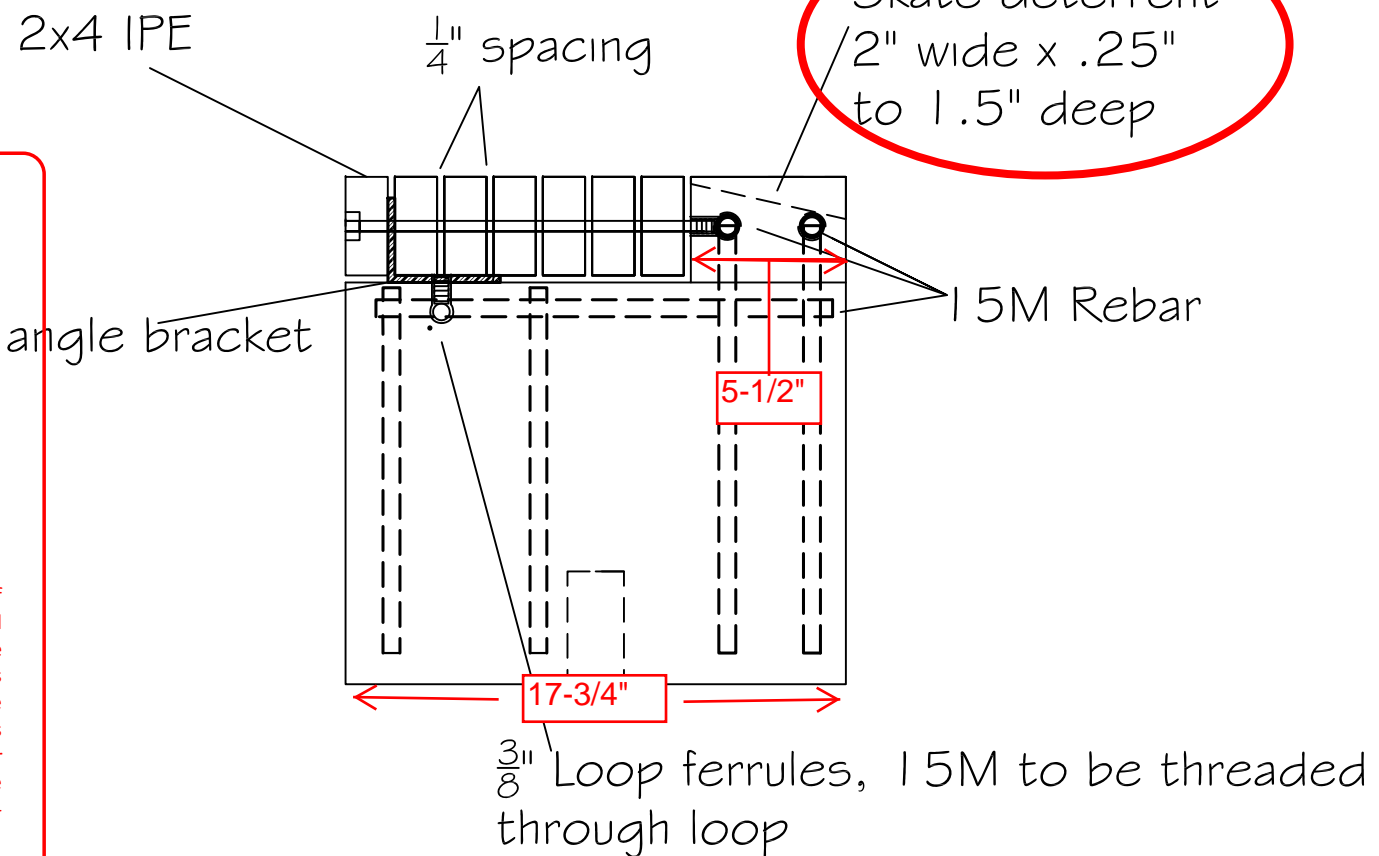
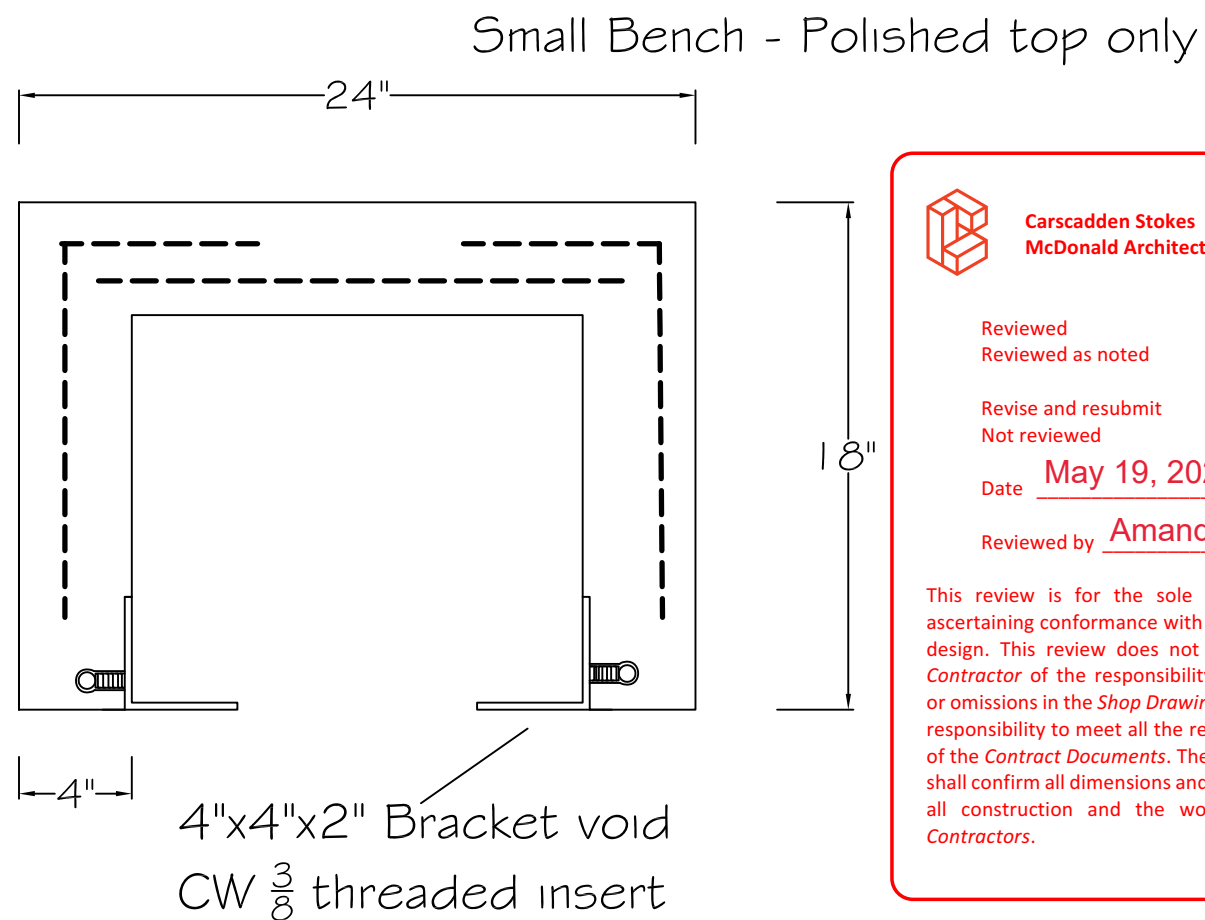
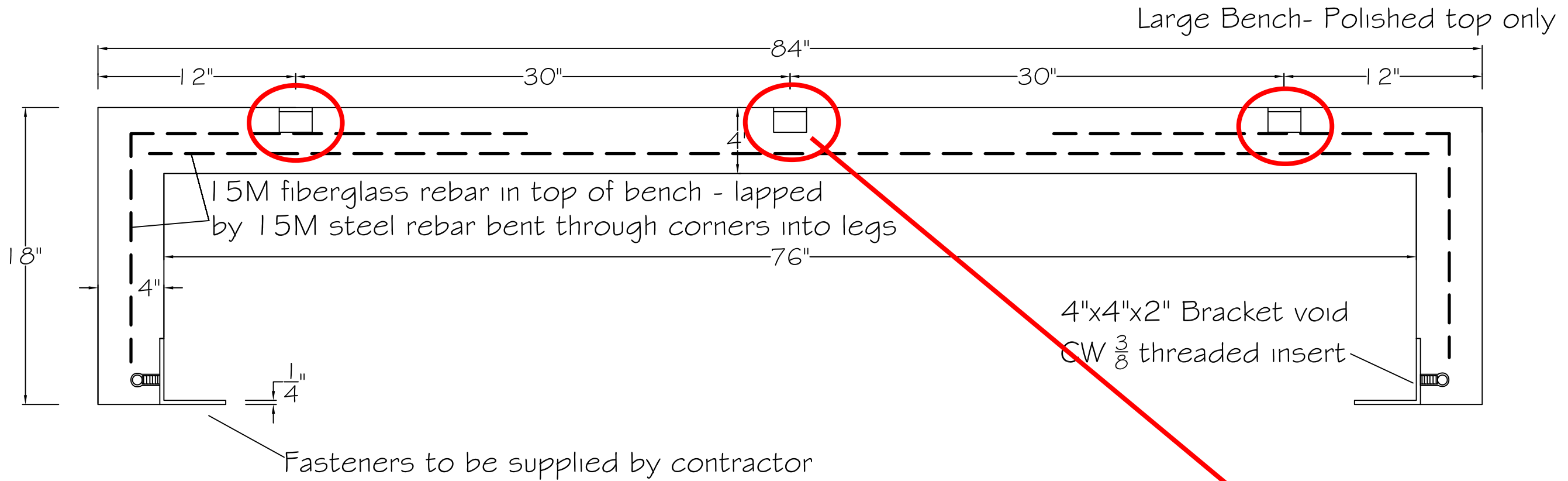
REQUESTED BY:  
JA

DRAWN BY:  
Chris Allen

DWG # 2

DATE: OCT 2019

SCALE



**Carscadden Stokes**  
**McDonald Architects Inc.**

Reviewed   $\frac{1}{4}$ " angle bracket  
 Reviewed as noted

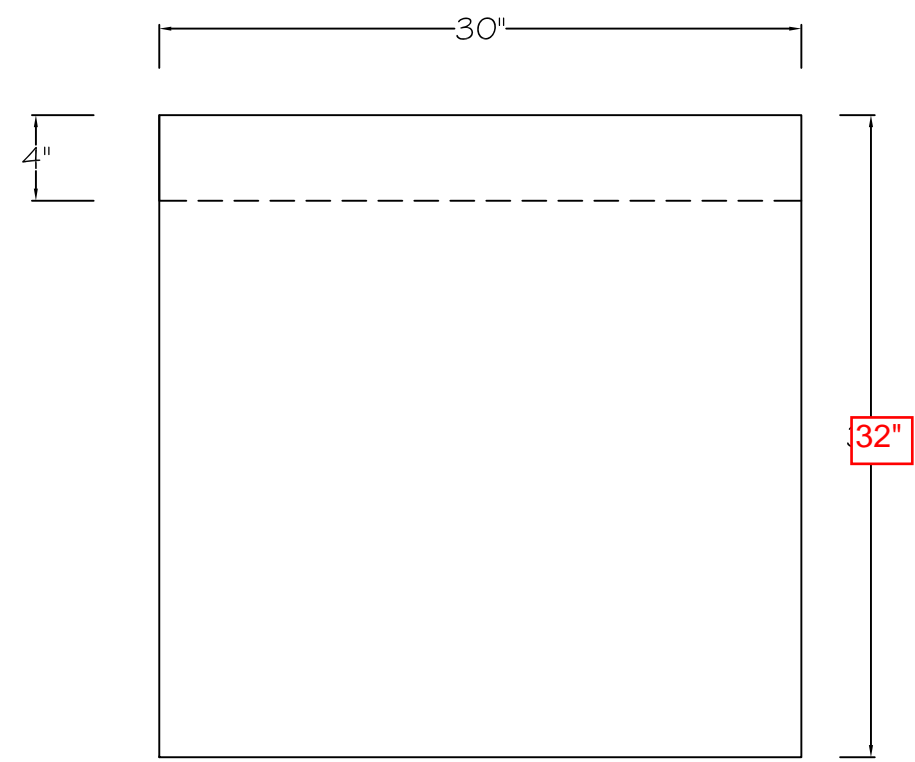
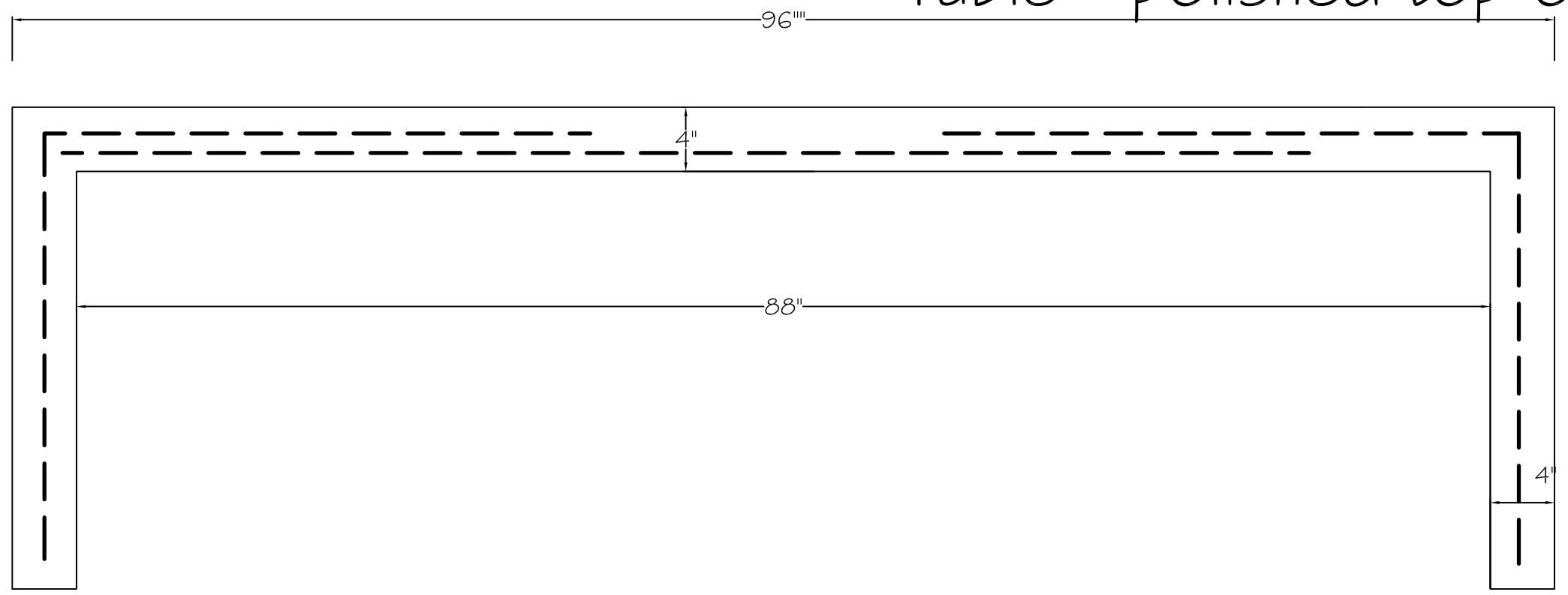
Revise and resubmit   
 Not reviewed

Date May 19, 2020

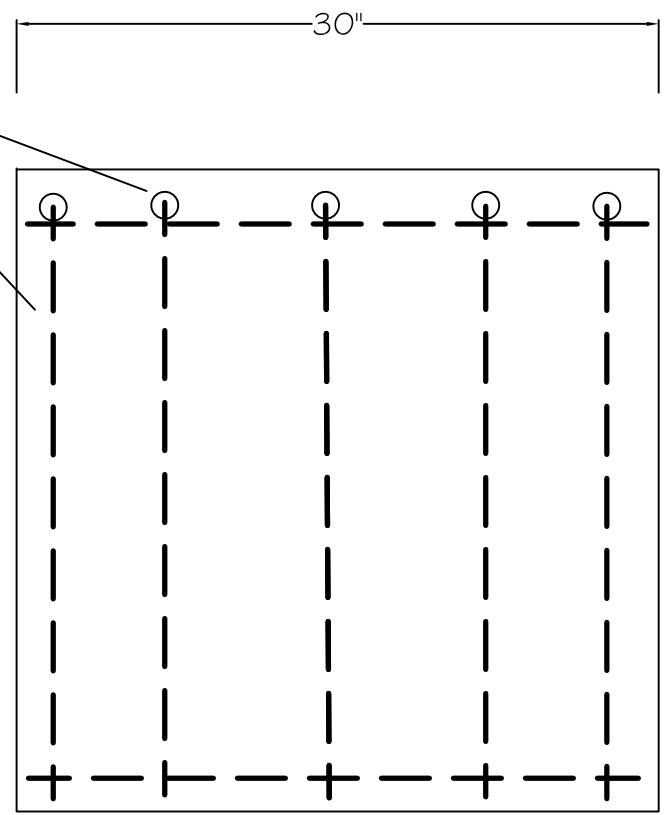
Reviewed by Amanda J.

This review is for the sole purpose of ascertaining conformance with the general design. This review does not relieve the Contractor of the responsibility for errors or omissions in the Shop Drawings or of the responsibility to meet all the requirements of the Contract Documents. The Contractor shall confirm all dimensions and coordinate all construction and the work of Sub-Contractors.

# Table - polished top only



15M Bent with 2' lap splice



www.sandersonconcrete.ca  
 1 2665 116 Ave Surrey,  
 BC V3V 3S6  
 Ph. 604-580-4108  
 Toll free 800-671-8882  
 FAX. 604-580-4111  
 info@sandersonconcrete.com

PREPARED FOR

PROJECT NAME

Coquitlam Table

REQUESTED BY:

Jan Arntorp

DRAWN BY:

Chris Allen

DWG #

1/1

DATE: JAN 2020

SCALE